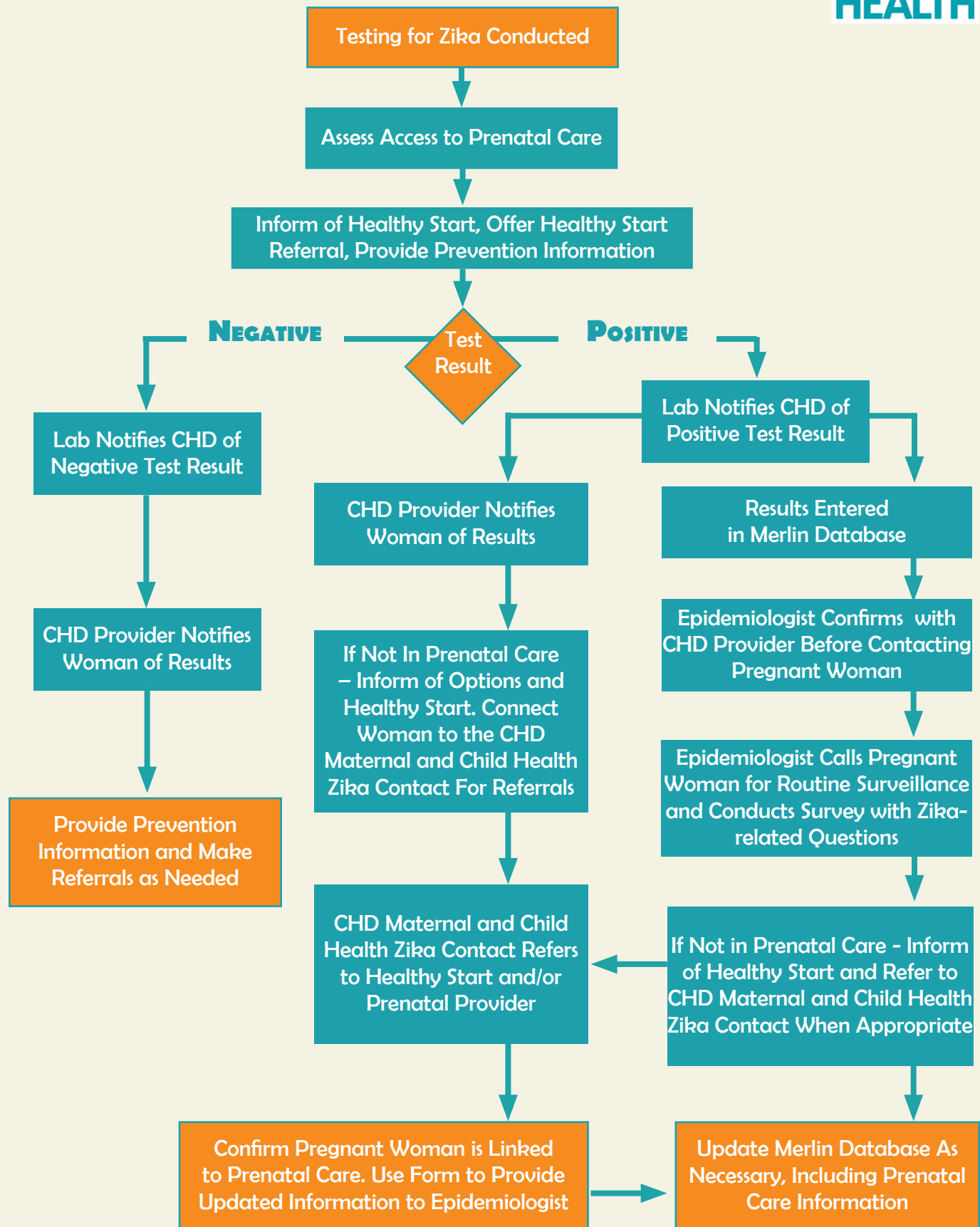
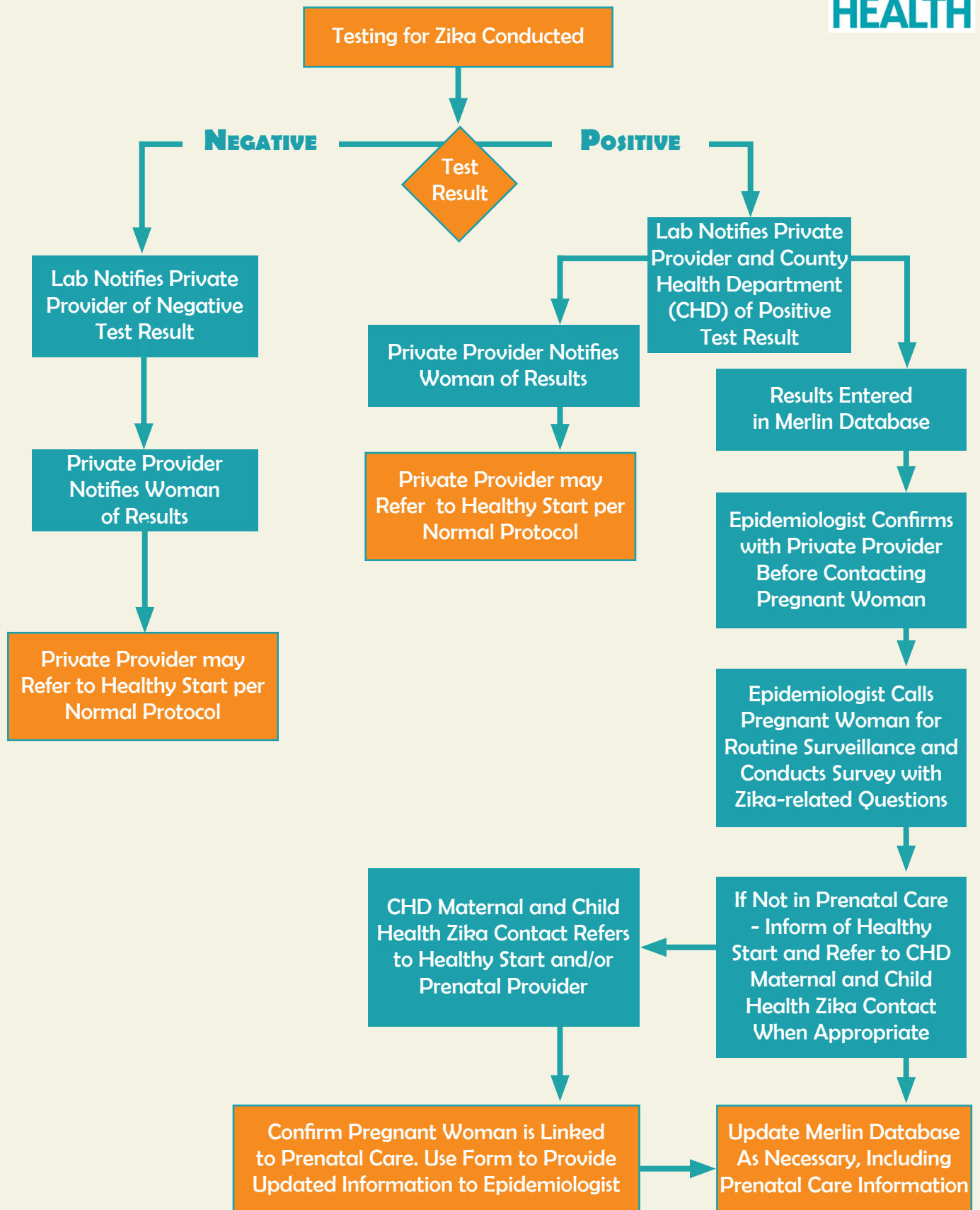


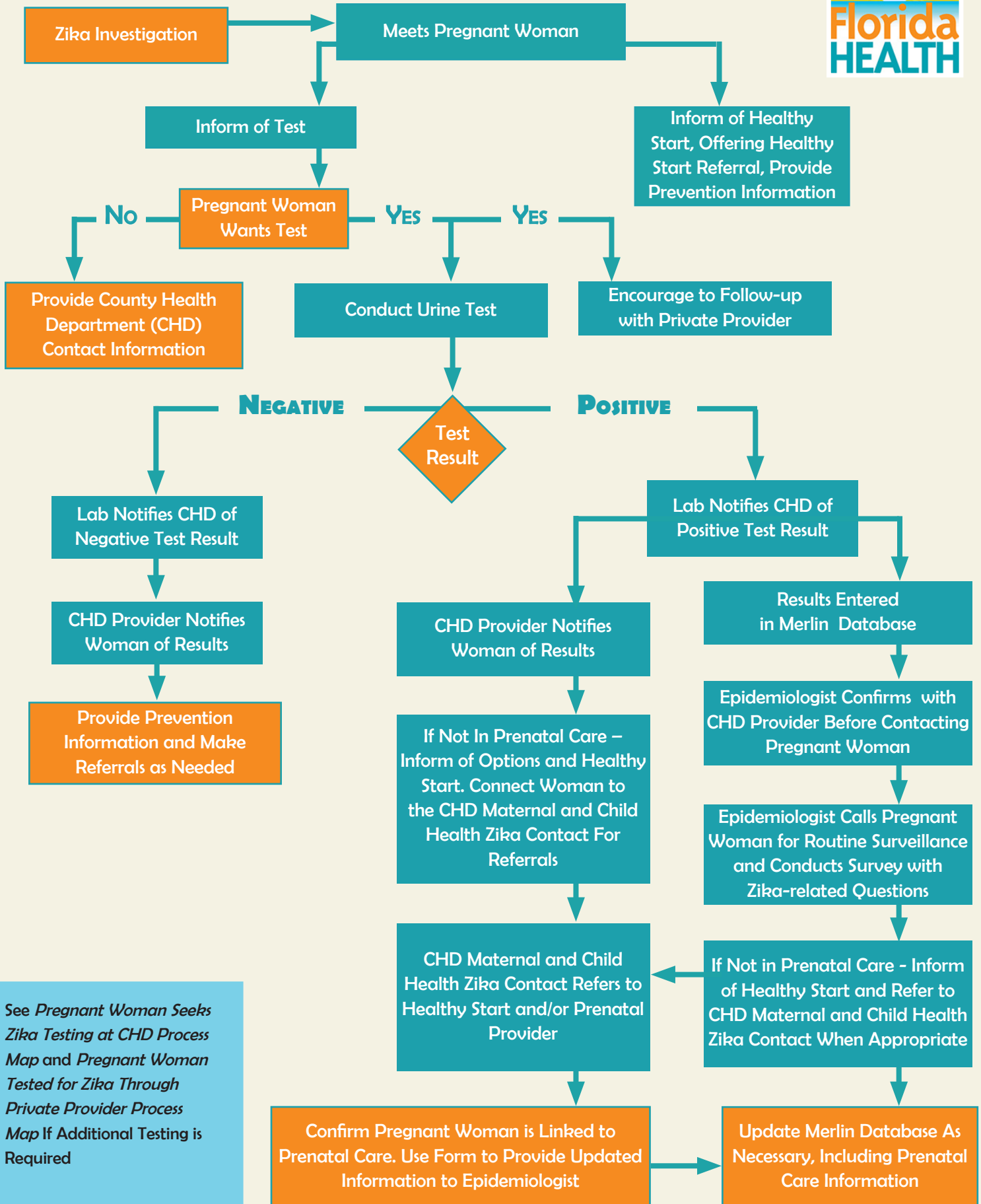
PREGNANT WOMAN TESTED FOR ZIKA AT COUNTY HEALTH DEPARTMENT (CHD)



PREGNANT WOMAN TESTED FOR ZIKA AT PRIVATE PROVIDER



ZIKA INVESTIGATION (DOOR-TO-DOOR)



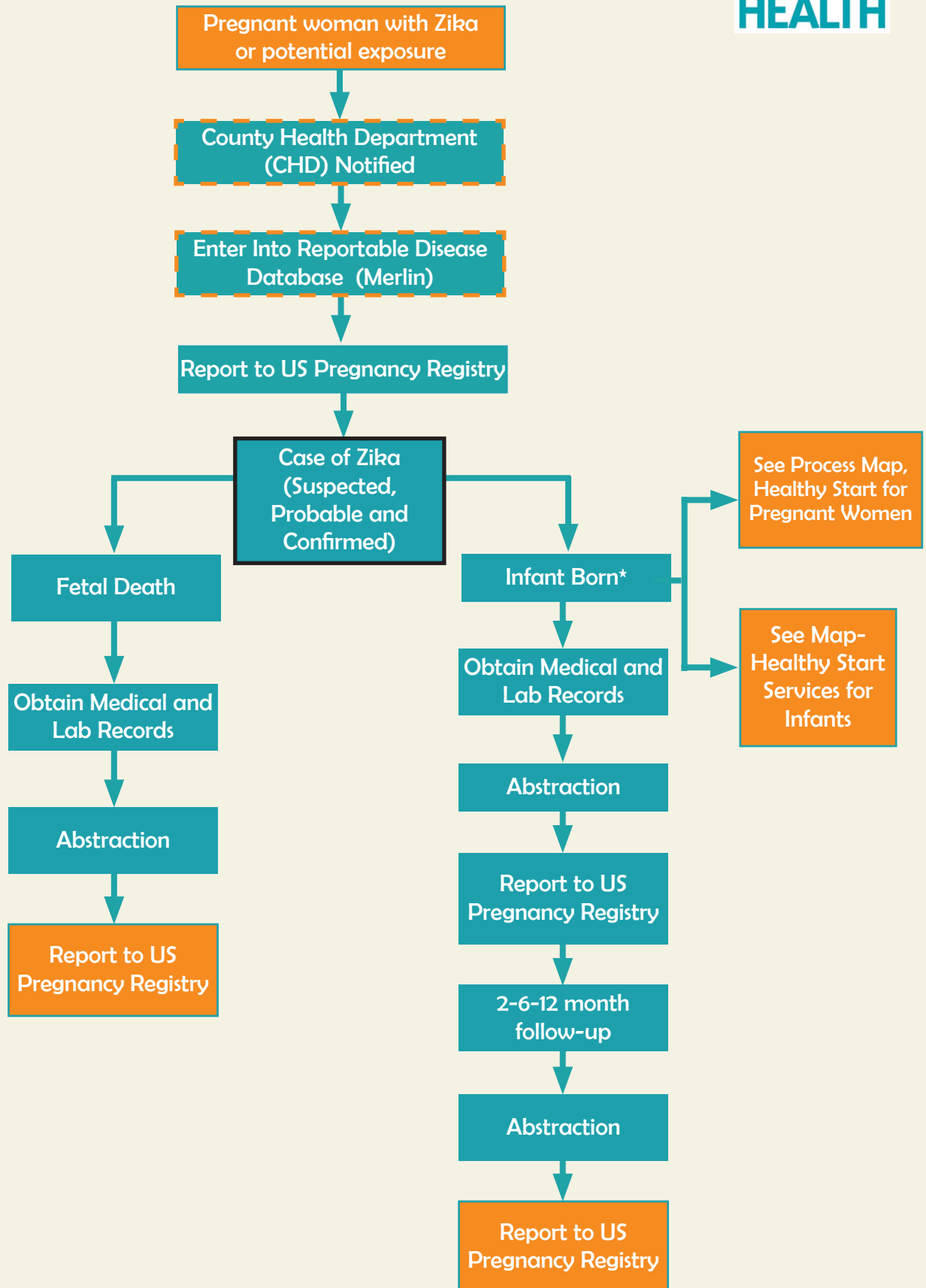
See Pregnant Woman Seeks Zika Testing at CHD Process Map and Pregnant Woman Tested for Zika Through Private Provider Process Map If Additional Testing is Required

NOTES

- Effective July 1, 2016, legally residing immigrants may now also be eligible for Medicaid and KidCare.
- DCF ACCESS website to apply for Medicaid: <http://www.myffamilies.com/service-programs/access-florida-food-medical-assistance-cash>
- Referral to determine eligibility for Medicaid accomplishes referral for CMS's Managed Care Plan, including Medicaid and KidCare. For more information about CMS Plan eligibility visit www.cmsplan-florida.gov/eligibility-and-services.
- Presumptively Eligible Pregnant Women (PEPW) is temporary coverage for prenatal care only (45 days) and is intended to assist pregnant women to get into prenatal care while they complete the application and determination process for ongoing Medicaid.
- * For pregnant women who do not meet the citizenship requirements for Medicaid, they may be eligible for Emergency Medical Assistance for Non-Citizens.
- RPICC= Regional Perinatal Intensive Care Centers

PREGNANT WOMAN WITH ZIKA OR POTENTIAL EXPOSURE

DOH FLORIDA ZIKA PREGNANCY REGISTRY AND MICROCEPHALY/CNS+ SURVEILLANCE



NOTES

- + CNS = central nervous system disorders
- * Mother and Infant should both be tested at delivery
- - - - County Health Department Activity
- _ _ _ State Office Zika Pregnancy Registry and Florida Birth Defects Registry Coordinators' Activity

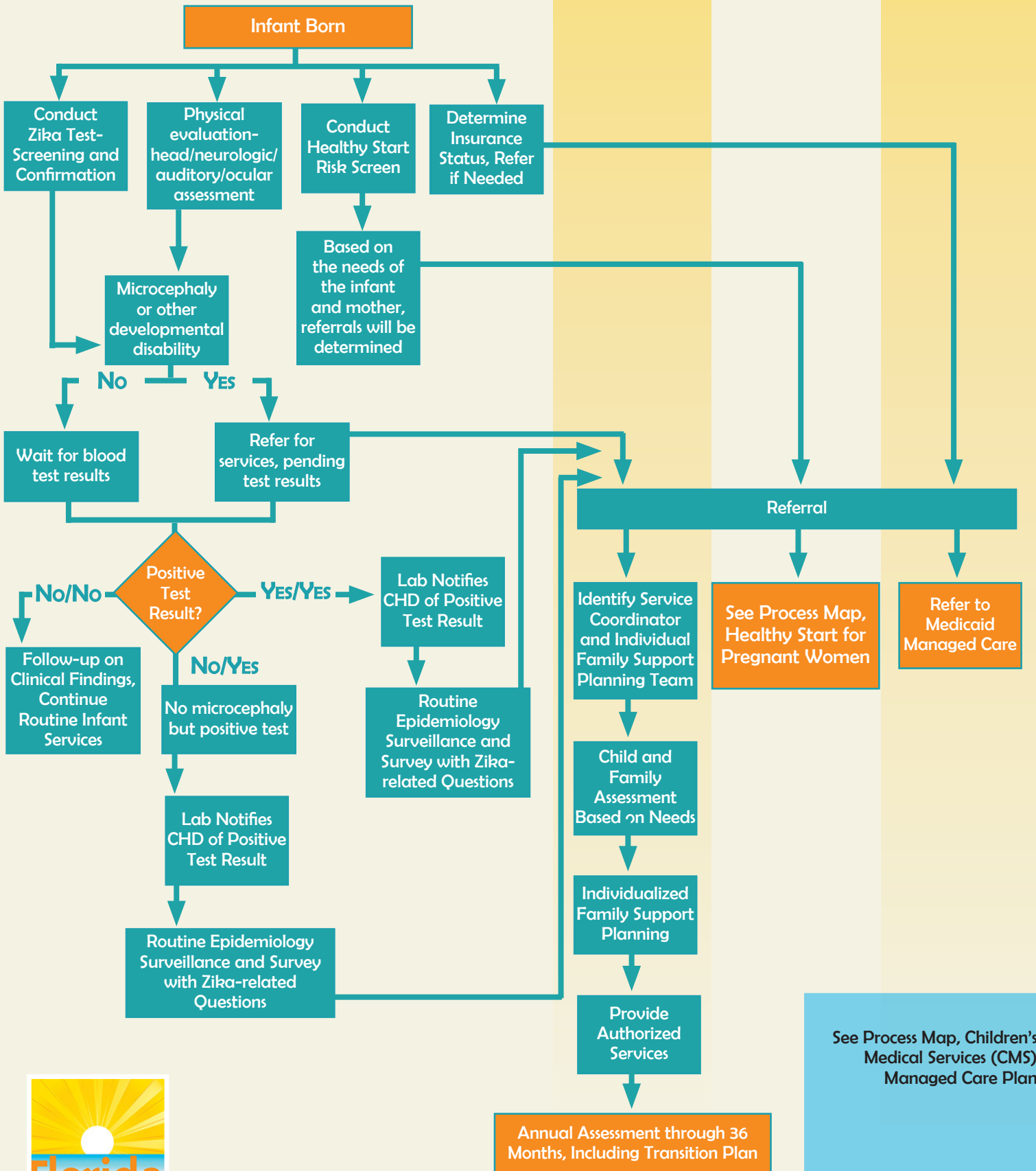
INFANT BORN FROM A WOMAN WITH A POSITIVE ZIKA TEST

HEALTH CARE SYSTEM AND DIAGNOSTIC TESTING FOR INFANT

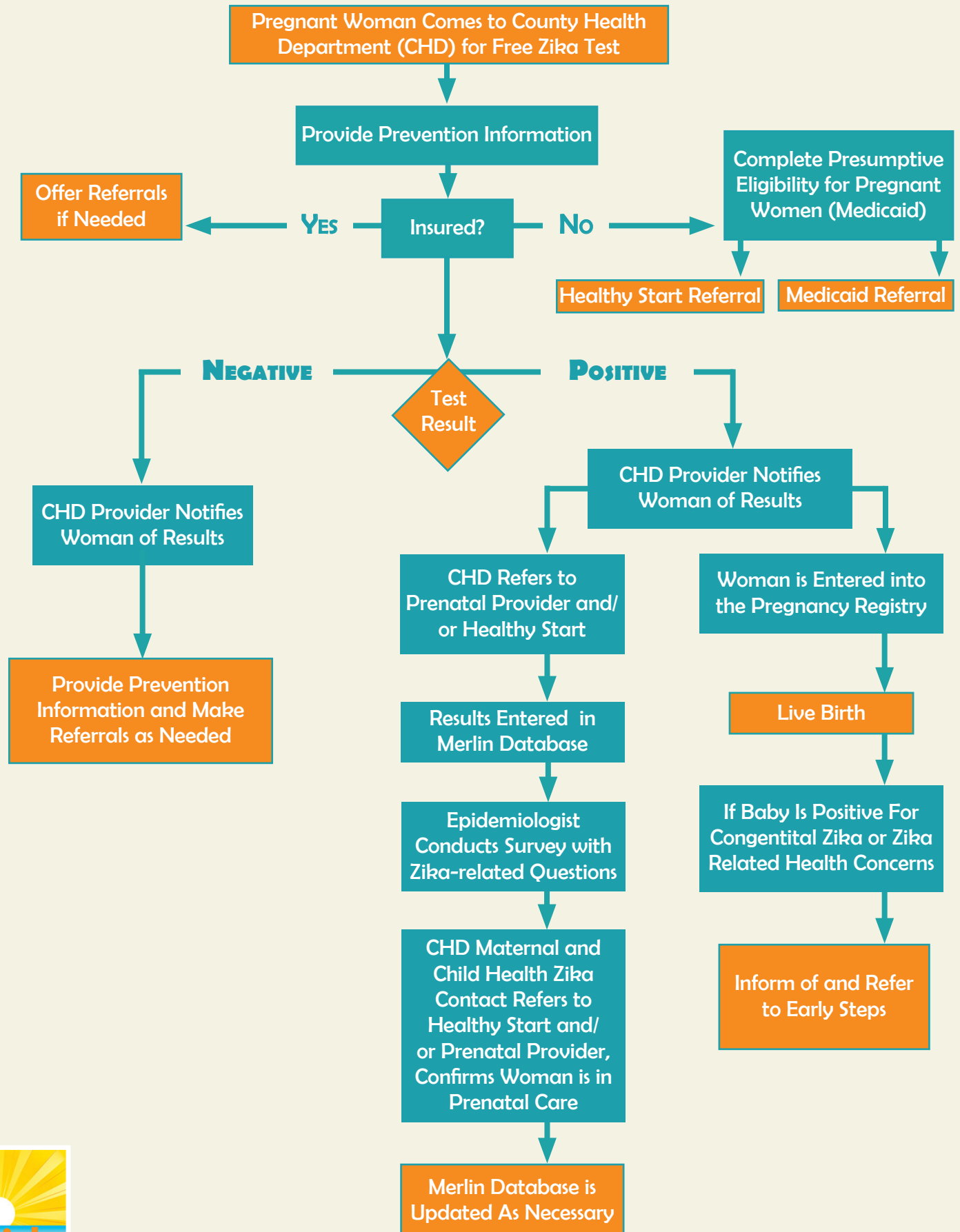
EARLY STEPS

HEALTHY START

MEDICAID



SYSTEM OF LINKAGE TO CARE FOR ZIKA POSITIVE PREGNANT WOMEN & INFANTS



**Children's Medical Services
Managed Care Plan (CMS Plan)** is designed for those individuals who are Medicaid or KidCare eligible and have special health care needs.



Children under the age of 21 with special health care needs

Must meet financial eligibility requirements

To see if you are eligible for Medicaid, call the Department of Children and Families (DCF) toll free at 1.866.762.2237 or visit www.MyFLFamilies.com

To see if you are eligible for Florida KidCare, call toll free at 1.888.540.5437 or visit www.FloridaKidCare.org

Must meet clinical eligibility requirements

To participate in the parent survey, call local Area Office or toll free 1.855.901.5390

Eligible for Medicaid Title XIX *

OR

Eligible for KidCare Title XXI *

*If one program finds you potentially eligible for the other, a referral will be made

A physician attests to the child's qualifying medical condition by following the physician attestation process*

OR

Parents participate in a parent-based survey through CMS Plan Area Office

*Instructions and form can be found on the PCP Portal page on the CMS Plan website www.CMSPlan.FloridaHealth.gov

Was your child determined to be clinically eligible?

If no, you may request a rescreen at any time

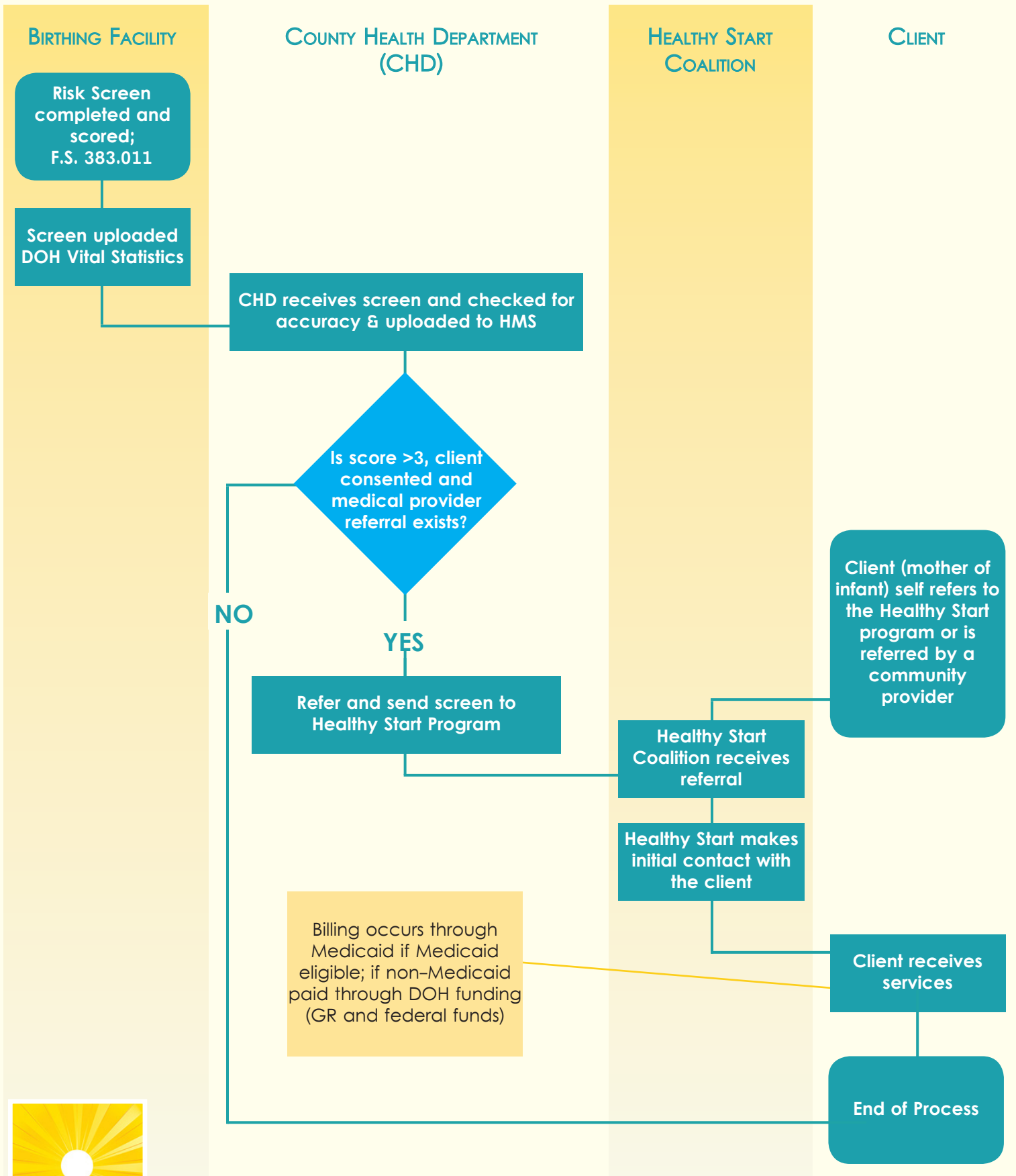
To discuss options, call the Agency for Health Care Administration (AHCA) Medicaid Choice Counseling toll free 1.877.711.3662

If yes and eligible for **Medicaid**, you may choose a Managed Care Plan in your region. It is your choice if you want to be in the CMS Plan.

If yes and eligible for **KidCare**, the child is automatically enrolled. You may opt out at any time.

Once enrolled in the CMS Plan, you will receive a Member Handbook, which is also available online, and an ID card for your child.

Healthy Start Infant Services



Healthy Start Services For Pregnant Women

